



*Grosse Pointe Park  
Department of Public  
Safety*



*Annual Report*

**2013**



March 24, 2014

Mr. Dale Krajniak  
City Manager  
Grosse Pointe Park, MI. 48230

Dear Mr. Krajniak;

I present to you, Mayor Heenan and the members of the Council the Annual report of the year 2013. This report describes the events and activities of the Department for the year. The report also reflects the activities, dedication and commitment displayed by all members of the Department, of whom I am extremely proud.

As I have indicated in past reports, the statistics we report are consistent with CLEMIS, the reporting system we participate in. CLEMIS is a multi-jurisdictional program that enables us to monitor activities internally as well as with other agencies in the system. The system is connected directly to the dispatch and our in-car systems. This system also automatically reports our incidents to the State.

In the 2012 Annual Report I reported to you that overall crime reported to the Department totaled 539 incidents. This year, with 470 total incidents reported to the Department, we realized an overall **drop in crime of approximately 13%**. This number is the lowest we have reported in many years. In reviewing and breaking down the categories, we experienced a **decrease in Part A crimes of almost 11%** with 347 reported compared to 387 last year. In the area of Part 1 or Index Crimes, the seven most serious crimes reported, we reported 267 which amounts to an **8% drop** from 2012.

One area that we noted a significant decrease was in Burglary. In 2012 we experienced a noticeable increase compared to years past. It was associated to a number of repeat type offenses. This year we reported 22 incidents, again more in line with the lower totals we had from years past.

Although we did see an increase in vehicle theft with 56 reported compared to 42 in 2012, we no longer have totals of almost 100 as we did in years past. Aggressive patrol certainly plays a big part and the officers do an outstanding job. Our stolen car task force, ACTION, continues to do a great job and works with neighboring agencies to reduce the totals.

The Detective Bureau also plays a critical role in our overall success. With almost 300 adult and juvenile arrests there is a considerable amount of follow-up investigations and court proceedings that need to be done each year. What is impressive is that with the follow-ups and the investigations we are able to clear a number of our criminal cases. In 2013 the Detective Bureau had a clearance rate of 45% which far exceeds the State average of 32%. The Youth Service Unit, which handles write-up and follow-up work on all juveniles, continues to be a critical part of this success.

We did realize a slight increase in fire activities last year. We responded to 118 calls for service compared to 109 the previous year. Fortunately the vast majority were found to be false alarms. We did respond to 15 dwelling fires but with the rapid response from the officers on the road we are able to contain the vast majority of fires to a minimum.

In 2013 we answered 304 request for our medic, which included 9 for services outside of Grosse Pointe Park. This service is a critical one that this Department provides and our EMT's do a great job. To have at least two medics respond to a call, with a response time of minutes, means a great deal to our residents.

The information I have provided reflects just a small portion of the total number of calls for service we handle each and every year. In addition to the numbers given so far, we also responded to over 7,500 other calls for service. While certainly not of an emergency nature, they were requests for service from our citizens. I am proud to say they were handled in the same professional manner as the more serious ones.

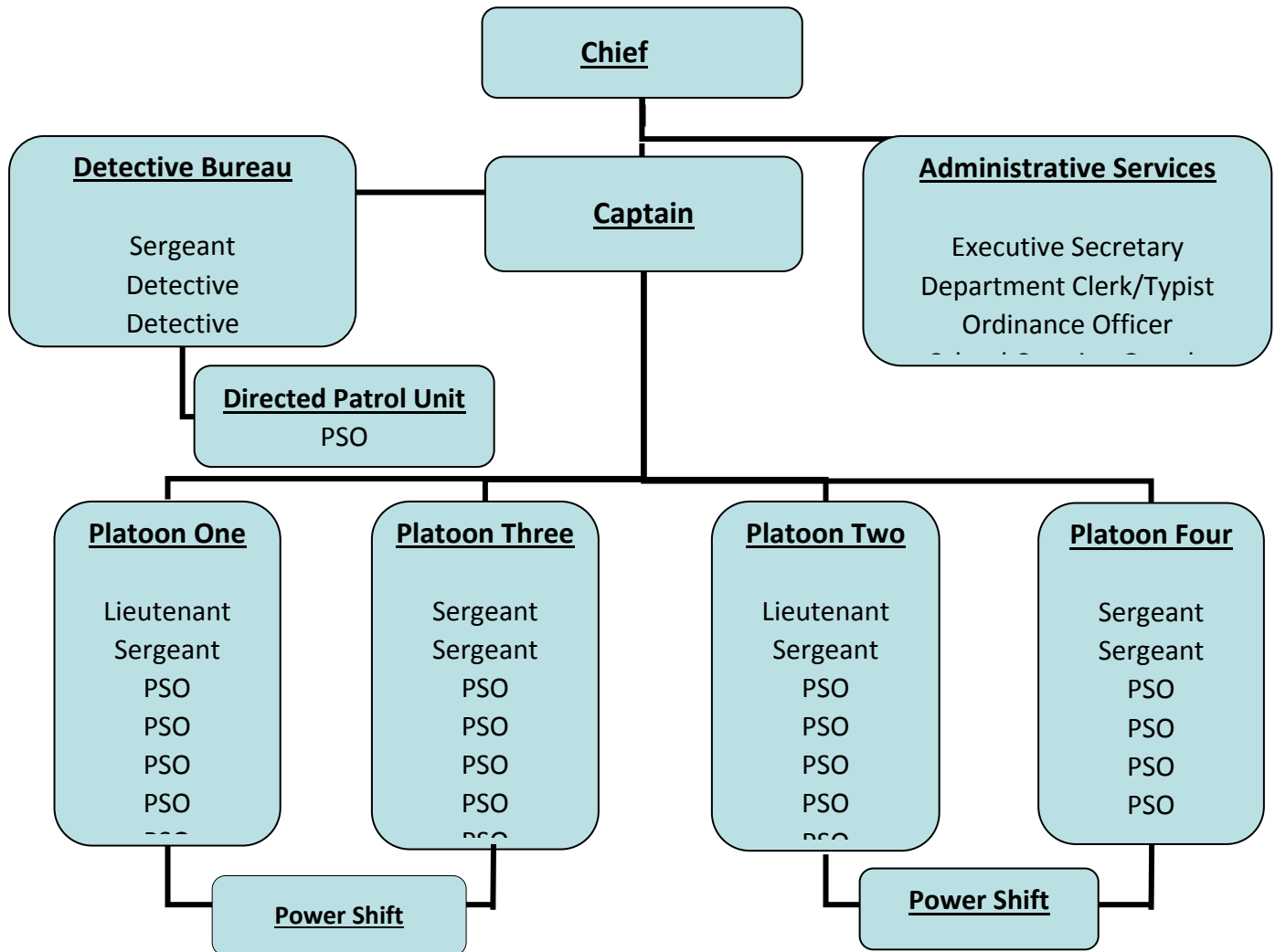
I also want to advise you of the progress in the combination of the Grosse Pointe Park and Grosse Pointe City dispatch. As you will recall, that merger was approved in early 2013. After many meetings, studies and discussions with those involved, November 1<sup>st</sup> we went operational. It has been extremely successful and our Dispatchers have done an outstanding job.

In closing I again want to thank you, Mayor Heenan and the members of the Council for your continued support. While I am grateful for your support, I want to also take a moment to compliment the men and women who work for this Department for the professional manner in which they conduct business. I am extremely fortunate to work with the officers, dispatchers and civilian employees who consistently display that professional attitude. Together we stand ready to proudly serve our residents.

Respectfully submitted

David A. Hiller  
Chief of Police

# Department Organizational Chart



# Department Personnel Roster

• • NAME	RANK	DATE PROMOTED	DATE APPOINTED
DAVID A. HILLER	CHIEF	07-10-01	01-03-72
DAVID P. LOCH	CAPTAIN	12-28-11	02-24-86
EDWARD T. ARNOLD	LIEUTENANT	02-15-08	08-20-90
JAMES M. HOSHAW	LIEUTENANT	12-28-11	02-11-91
JOSEPH T. SREBERNAK	SERGEANT	08-01-96	05-07-90
JAMES M. VOGLER	SERGEANT	07-01-98	09-20-91
JEFFREY M. LONGO	SERGEANT	02-15-08	10-26-92
BRENT E. MERLINGTON	SERGEANT	02-15-08	03-05-96
COLIN D. CONNAIRE	SERGEANT	12-28-11	07-21-03
JAMES A. BOSTOCK	SERGEANT	12-28-11	08-19-03
ANTHONY B. BLAIN	SERGEANT	10-26-12	12-12-01
MICHAEL A. NARDUZZI	DETECTIVE	06-21-09	04-15-96
JEREMY S. PITTMAN	DETECTIVE	10-26-12	02-15-08
LEO G. DERAEDT	PUBLIC SAFETY OFFICER		12-07-87
JOSEPH P. POIRIER	PUBLIC SAFETY OFFICER		01-30-89
CHRISTOPHER G. FLANAGAN	PUBLIC SAFETY OFFICER		02-06-89
NICK F. NEAMONITIS	PUBLIC SAFETY OFFICER		07-17-89
MICHAEL A. NAJM	PUBLIC SAFETY OFFICER		05-16-90
ROBERT W. KROMPATIC	PUBLIC SAFETY OFFICER		06-30-93
CHRISTOPHER S. JONES	PUBLIC SAFETY OFFICER		04-22-94
THOMAS F. LAZARSKI	PUBLIC SAFETY OFFICER		05-27-94
DANIEL J. KOLAR	PUBLIC SAFETY OFFICER		02-08-95
ERIK A. DAVIS	PUBLIC SAFETY OFFICER		12-02-95
THOMAS C. GAMICCHIA	PUBLIC SAFETY OFFICER		11-29-96
KEITH L. ANDERSEN	PUBLIC SAFETY OFFICER		01-01-97
MICHAEL L. MILLER	PUBLIC SAFETY OFFICER		07-01-98
RYAN S. MILROTH	PUBLIC SAFETY OFFICER		08-09-99
TERRY L. HAYS	PUBLIC SAFETY OFFICER		05-24-00
STEPHEN W. THIEL	PUBLIC SAFETY OFFICER		07-30-01
RYAN C. WILLMER	PUBLIC SAFETY OFFICER		12-12-01
THOMAS J. TAYLOR	PUBLIC SAFETY OFFICER		07-30-02
RONALD M. LOOSVELT	PUBLIC SAFETY OFFICER		07-21-03
PAUL S. PIONK	PUBLIC SAFETY OFFICER		07-21-03

# Department Personnel Roster

NAME	RANK	DATE PROMOTED	DATE APPOINTED
JESSICA L. WORRALL	PUBLIC SAFETY OFFICER		01-07-04
THOMAS O. CARD	PUBLIC SAFETY OFFICER		03-24-08
ROBERT RUGGERO	PUBLIC SAFETY OFFICER		12-19-12
JILL A. MAZZARA	CHIEF DISPATCHER	02-24-97	02-01-93
JOSEPHINE V. HENDRIX	DISPATCHER	11-05-00	08-15-94
JODI E. EAST	DISPATCHER	11-05-00	01-07-99
DAWN KELLY	DISPATCHER		07-10-11
MARTAROSE AGUILERA	EXECUTIVE SECRETARY	06-25-01	09-11-95
CAROL A. SEMANN	CLERK/TYPIST		05-28-02
CATHERINE TRUOG	SCHOOL CROSSING GUARD		08-28-13
LAURA VANDEPUTTE	SCHOOL CROSSING GUARD		08-29-13
DAVID L. STEWART	SCHOOL CROSSING GUARD		08-28-07
KATANYA LANDERS	SCHOOL CROSSING GUARD		08-28-13
EDWIN J. MANNING	SCHOOL CROSSING GUARD		03-18-08
SUSAN K. MANNING	SCHOOL CROSSING GUARD		03-18-08

## Personnel Separations

REASON	DATE OF
--------	---------

# Awards

Each year members representing every level of the Department meet in January to form the Honors Board which reviews all recommendations for awards submitted for the previous calendar year. Recognition given by the department include the following awards:

## VALOR

For personal heroism above and beyond the call of duty.

## CITATION

For exceptional performance of the highest order.

## LIFE SAVING

A form of Citation for performance of an exceptional act to preserve life.

## WOUND

Any wound requiring medical treatment suffered by a member of the Department during the course of a public safety action that is the result of a felonious assault.

## CHIEF'S AWARD

For contributions by an employee who consistently gives outstanding service and contributes time, interest, and effort far beyond that is required.

## COMMENDATION

For outstanding performance well above the norm.

## CHIEF'S LETTER

For performance that requires official recognition.

.The Public Safety Department's awards for 2013 are:

### LIFE SAVING

PSO RYAN MILLROTH  
PSO MICHAEL MILLER

### CITATION

PSO LEO DERAEDT

### COMMENDATION

SGT JAMES BOSTOCK  
PSO JESSICA WORRALL  
PSO KOLAR

### CHIEF'S LETTER

PSO KEITH ANDERSON  
SGT. JAMES BOSTOCK  
PSO TERRY HAYS  
PSO TOM GAMICCHIA  
PSO DAN KOLAR  
PSO ROBERT KROMPATIC  
PSO MICHAEL MILLER  
SGT. JOSEPH SREBERNAK



# Administrative Services

The Administrative Service Section of the Grosse Pointe Park Department of Public Safety consists of the Chief, Captain, Executive Secretary, Department Clerk, and the Ordinance Officer. It is the responsibility of the Administrative Service Section to see that the Department operates in a professional manner at all times and to provide support services to the rest of the department. Developing and administering Department Policies and Procedures, working daily with City Officials, maintaining a working relationship with other law enforcement agencies and working closely with the Patrol and Command Unions are just a few examples of the activities of the Administrative Section.

The Executive Secretary and the Department Clerk conduct the daily business of the Department. The payroll, vouchers, purchase orders, Department records, personnel files, new employment applications, and all *Freedom of Information Act (FOIA)* requests received by the Department and the City Attorney are just some of the duties of the Executive Secretary. The Department Clerk is responsible for the daily computer entry of incident report information not entered by the Patrol Division, and all traffic violations and arrest records. The Clerk also provides clerical support to the Detective Bureau.

Ordinance Officer, a part-time position with the Department, are assigned numerous duties pertaining to animal complaints, and assist the Uniform Division with enforcing various parking restrictions throughout the city. They also perform other duties as needed throughout the day that are necessary for the efficient operation of the Department.

# Four Year Incident Comparison

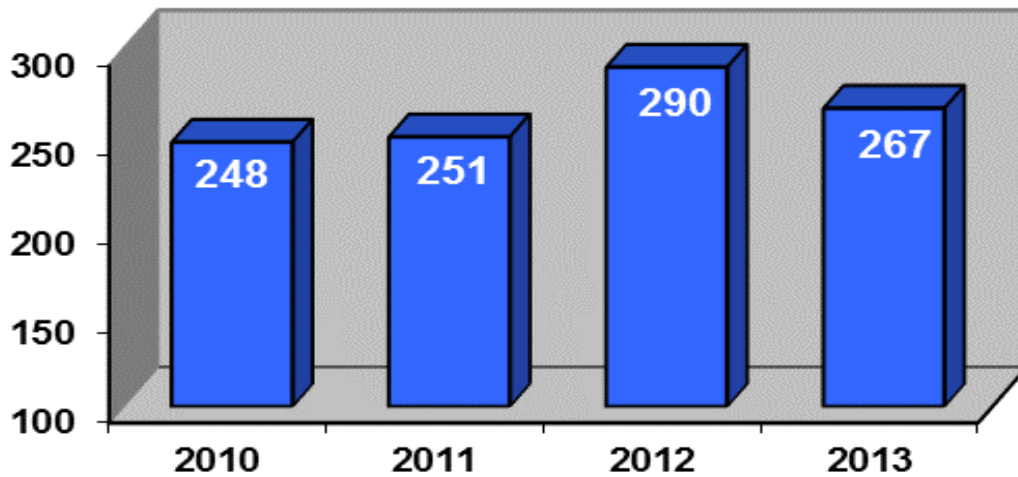
PART A OFFENSES	2013	2012	2011	2010
09001-09003 Murder/Manslaughter/Justifiable Homicide	1	1		
10001-10002 Kidnapping/Abduction				
11001-11008 Criminal Sexual Conduct 1-8		3	1	1
12000 Robbery	5	5	6	2
13001 Non-Aggravated Assault	14	21	31	28
13002 Aggravated/Felonious Assault	10	8	7	8
13003 Intimidation/Stalking	3	2	4	2
20000 Arson	2	2	1	
21000 Extortion				
22001-22002 Burglary – with Intent	22	43	17	26
23001-23007 Larceny	171	186	178	173
24001 Motor Vehicle Theft	56	42	41	38
24002 Motor Vehicle as Stolen Property	6	5	6	1
24003 Motor Vehicle Fraud	2			
25000 Forgery/Counterfeiting			1	
26001-26005 Fraud	1	1	4	4
27000 Embezzlement				
28000 Stolen Property	2		1	3
29000 Damage to Property	37	35	44	42
30001-30003 Retail Fraud	1	3	1	3
35001 Violation of Controlled Substance	9	8	15	17
35002 Narcotic Equipment Violations	1		4	3
36001-36002 Sexual Penetration – Non-forcible				
37000 Obscenity				
39001-39004 Gambling				
40001 Commercialized Sex				
51000 Bribery				
52001-52003 Weapons Offense	4	5	1	4
<b>PART A TOTAL</b>	<b>347</b>	<b>387</b>	<b>363</b>	<b>356</b>

# Four Year Incident Comparison

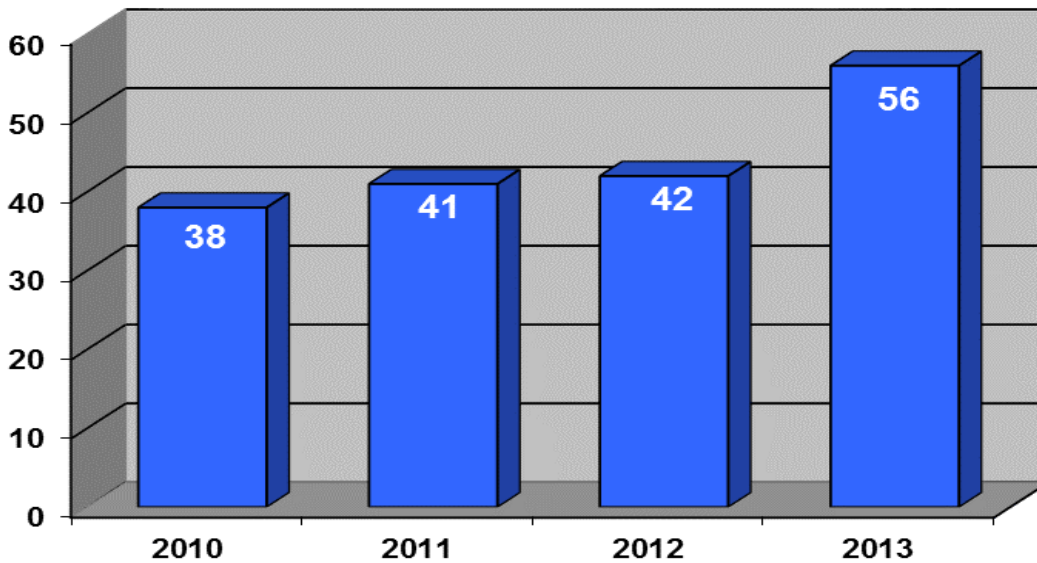
<b>PART B OFFENSES</b>	<b>2013</b>	<b>2012</b>	<b>2011</b>	<b>2010</b>
01000 Sovereignty				
02000 Military				
03000 Immigration				
09003 Negligent Homicide Vehicle/Boat/ Snowmobile/ORV				
14000 Abortion				
22003 Burglary – Unlawful Entry (No Intent)				
22004 Possession of Burglary Tools				
26006 Fraud – Bad Checks	1	4	2	1
36003 Peeping Tom				
36004 Sex Offense – Other				
38001 Family – Abuse/Neglect Nonviolent				
38002 Family – Nonsupport				
38003 Family – Other				
41001 Liquor License – Establishment				
41002 Liquor Violations – Other	6	2	3	5
42000 Drunkenness				
48000 Obstructing Police	6	9	8	9
49000 Escape/Flight				
50000 Obstructing Justice	36	54	69	92
53001 Disorderly Conduct	3	9	6	7
53002 Public Peace – Other				
54001 Hit and Run Motor Vehicle Accident		2		1
54002 OUIL or OUID	22	14	22	14
55000 Health and Safety	1			
56000 Civil Rights				
57001 Trespass	2	4	2	1
57002 Invasion of Privacy – Other				
58000 Smuggling				
59000 Election Laws				
60000 Antitrust				
61000 Tax/Revenue				
62000 Conservation				
63000 Vagrancy		1	2	2
70000 Juvenile Runaway			1	
73000 Miscellaneous Criminal Offense	4	4	11	12
75000 Solicitation (all crimes except prostitution)			2	
77000 Conspiracy (all crimes)				
<b>PART B TOTAL</b>	<b>81</b>	<b>103</b>	<b>126</b>	<b>146</b>
Traffic – Non-OWI Arrests	42	49	55	9
<b>TOTAL CRIMINAL INCIDENTS</b>	<b>470</b>	<b>539</b>	<b>544</b>	<b>510</b>

# Crime Trends

## Total Index Offenses



## Vehicle Theft



# Adult Arrests

PART A OFFENSES	2013	2012	2011	2010
09001-09003 Murder/Manslaughter/Justifiable Homicide	1	1		
10001-10002 Kidnapping/Abduction				
11001-11008 Criminal Sexual Conduct 1-8				1
12000 Robbery	1	1	4	1
13001 Non-Aggravated Assault	9	15	21	32
13002 Aggravated/Felonious Assault	8	4	8	7
13003 Intimidation/Stalking				1
20000 Arson	1	1		
21000 Extortion				
22001-22002 Burglary – with Intent	13	23	8	28
23001-23007 Larceny	21	14	35	30
24001 Motor Vehicle Theft	2	3	7	8
24002 Motor Vehicle as Stolen Property	6	7	8	1
24003 Motor Vehicle Fraud				
25000 Forgery/Counterfeiting				
26001-26005 Fraud		2	4	1
27000 Embezzlement				1
28000 Stolen Property	3		1	4
29000 Damage to Property	1		2	5
30001-30003 Retail Fraud	1	2	1	3
35001 Violation of Controlled Substance	9	12	14	17
35002 Narcotic Equipment Violations	1		4	3
36001-36002 Sexual Penetration – Non-forcible				
37000 Obscenity				
39001-39004 Gambling				
40001 Commercialized Sex				3
51000 Bribery				
52001-52003 Weapons Offense	3	4	1	4
<b>PART A TOTAL</b>	<b>80</b>	<b>89</b>	<b>116</b>	<b>150</b>

# Adult Arrests

<b>PART B OFFENSES</b>	<b>2013</b>	<b>2012</b>	<b>2011</b>	<b>2010</b>
01000 Sovereignty				
02000 Military				
03000 Immigration				
09003 Negligent Homicide Vehicle/Boat/ Snowmobile/ORV				
14000 Abortion				
22003 Burglary – Unlawful Entry (No Intent)				
22004 Possession of Burglary Tools				
26006 Fraud – Bad Checks		2		2
36003 Peeping Tom	1			
36004 Sex Offense – Other				
38001 Family – Abuse/Neglect Nonviolent				
38002 Family – Nonsupport				
38003 Family – Other				
41001 Liquor License – Establishment				
41002 Liquor Violations – Other	5	3	3	5
42000 Drunkenness				
48000 Obstructing Police	5	7	6	7
49000 Escape/Flight		1		
50000 Obstructing Justice	33	51	66	94
53001 Disorderly Conduct	1	6	2	8
53002 Public Peace – Other				
54001 Hit and Run Motor Vehicle Accident				
54002 OUIL or OUID	21	14	22	14
55000 Health and Safety				
56000 Civil Rights				
57001 Trespass	3	3	2	4
57002 Invasion of Privacy – Other				
58000 Smuggling				
59000 Election Laws				
60000 Antitrust				
61000 Tax/Revenue				
62000 Conservation				
63000 Vagrancy		1		
73000 Miscellaneous Criminal Offense		4	5	6
75000 Solicitation (all crimes except prostitution)			2	
Traffic non-OWI	22	19	21	
<b>PART B TOTAL</b>	<b>91</b>	<b>111</b>	<b>129</b>	<b>140</b>
Arrests for other agencies	52	55	49	11
<b>TOTAL ADULT CRIMINAL ARRESTS</b>	<b>223</b>	<b>255</b>	<b>294</b>	<b>301</b>

# Juvenile Arrests

PART A OFFENSES	2013	2012	2011	2010
09001-09003 Murder/Manslaughter/Justifiable Homicide				
10001-10002 Kidnapping/Abduction				
11001-11008 Criminal Sexual Conduct 1-8				1
12000 Robbery	3		3	1
13001 Non-Aggravated Assault	1	1		1
13002 Aggravated/Felonious Assault	1	1	1	
13003 Intimidation/Stalking				
20000 Arson	2			
21000 Extortion				
22001-22002 Burglary – with Intent	2	14	2	10
23001-23007 Larceny	8	3	23	8
24001 Motor Vehicle Theft	3	4		
24002 Motor Vehicle as Stolen Property	13	1	1	
24003 Motor Vehicle Fraud				
25000 Forgery/Counterfeiting				
26001-26005 Fraud				
27000 Embezzlement				
28000 Stolen Property	6			
29000 Damage to Property		1		6
30001-30003 Retail Fraud				
35001 Violation of Controlled Substance	2	1	1	5
35002 Narcotic Equipment Violations				
36001-36002 Sexual Penetration – Non-forcible				
37000 Obscenity				
39001-39004 Gambling				
40001 Commercialized Sex				
51000 Bribery				
52001-52003 Weapons Offense	1	2		
<b>PART A TOTAL</b>	<b>42</b>	<b>28</b>	<b>31</b>	<b>32</b>

# Juvenile Arrests

<b>PART B OFFENSES</b>	<b>2013</b>	<b>2012</b>	<b>2011</b>	<b>2010</b>
01000 Sovereignty				
02000 Military				
03000 Immigration				
09003 Negligent Homicide Vehicle/Boat/ Snowmobile/ORV				
14000 Abortion				
22003 Burglary – Unlawful Entry (No Intent)				
22004 Possession of Burglary Tools				
26006 Fraud – Bad Checks				
36003 Peeping Tom				
36004 Sex Offense – Other				1
38001 Family – Abuse/Neglect Nonviolent				
38002 Family – Nonsupport				
38003 Family – Other				
41001 Liquor License – Establishment				
41002 Liquor Violations – Other	11		2	
42000 Drunkenness				
48000 Obstructing Police			7	2
49000 Escape/Flight				
50000 Obstructing Justice		1	8	1
53001 Disorderly Conduct				
53002 Public Peace – Other				
54001 Hit and Run Motor Vehicle Accident				
54002 OUIL or OUID				
55000 Health and Safety				
56000 Civil Rights				
57001 Trespass	1	3		
57002 Invasion of Privacy – Other				
58000 Smuggling				
59000 Election Laws				
60000 Antitrust				
61000 Tax/Revenue				
62000 Conservation				
63000 Vagrancy	2	3	2	4
70000 Juvenile Runaway				
73000 Miscellaneous Criminal Offense	4		1	
75000 Solicitation (all crimes except prostitution)				
77000 Conspiracy (all crimes)				
<b>PART B TOTAL</b>	<b>18</b>	<b>7</b>	<b>18</b>	<b>8</b>
Traffic – Non-OWI Arrests	5		1	1
<b>TOTAL JUVENILE CRIMINAL ARRESTS</b>	<b>65</b>	<b>35</b>	<b>50</b>	<b>41</b>



# Clearance Rates for Index Crimes

The following information reflects clearance rates for crimes that are categorized as Index or Part 1 Crimes by the FBI's Uniform Crime Report. Index Crimes include the crimes against person of homicide, rape, robbery, aggravated assault, and the crimes against property of burglary, larceny, motor vehicle theft, and arson. Index Offenses, are traditionally used for comparison purposes across the country. Over the years this Department has prided itself on an exceptionally high clearance rate for index offenses. This clearance rate is a result of dedicated work by the officers assigned to both the Uniform and the Detective Divisions of the Department. The clearance rate for the last four years is detailed below.

For each crime, the total numbers of incidents and the clearance rate is listed.

CRIMES	2013	2012	2011	2010	State*
Homicide	1 100% -	1 100%	0	0	31%
Criminal Sexual Conduct	0	3 66%	1 100%	1 100%	24%
Robbery	5 60%	5 20%	6 66%	2 50%	15%
Aggravated Assault	10 90%	8 50%	7 72%	8 100%	36%
Burglary	22 43%	43 33%	17 47%	26 77%	8%
Larceny	171 16%	186 10%	178 20%	173 16%	6%
Motor Vehicle Theft	56 12%	42 12%	41 17%	38 22%	8%
Arson	2 100%	2 50%	1 100%	0	10%

\* Statewide Clearance Rate is from 20012

The file classes listed below are used to count each of the eight crimes counted in Index Offenses

Crimes Against Persons: Homicide – 09001 - 09002, Criminal Sexual Conduct (CSC) – 11001 - 11008, Robbery – 12000, Aggravated Assault – 13002

Crimes Against Property: Burglary - 22001-22002, Larceny – 23001-23007, Motor Vehicle Theft – 24001, Arson - 20000

# Detective and Patrol Activities

The Grosse Pointe Park Department of Public Safety **Detective Bureau**, consisting of one Sergeant, two Detectives and one Public Safety Officer, is the investigative division of the Department. As such, its members perform various duties on a daily basis.

When the Detective Bureau successfully completes the investigation of a criminal matter, whether by arrests or other clearance measures, the case is considered closed or cleared. The **Clearance Rate** is based on the closure of these cases. In 2011 (latest data available) the average clearance rate for Michigan law enforcement agencies was 32% overall.

Below is the four-year **Clearance Rate** percentage for all crimes as reported to the State of Michigan for the Grosse Pointe Park Department of Public Safety.

## Overall Crime Clearance Rate

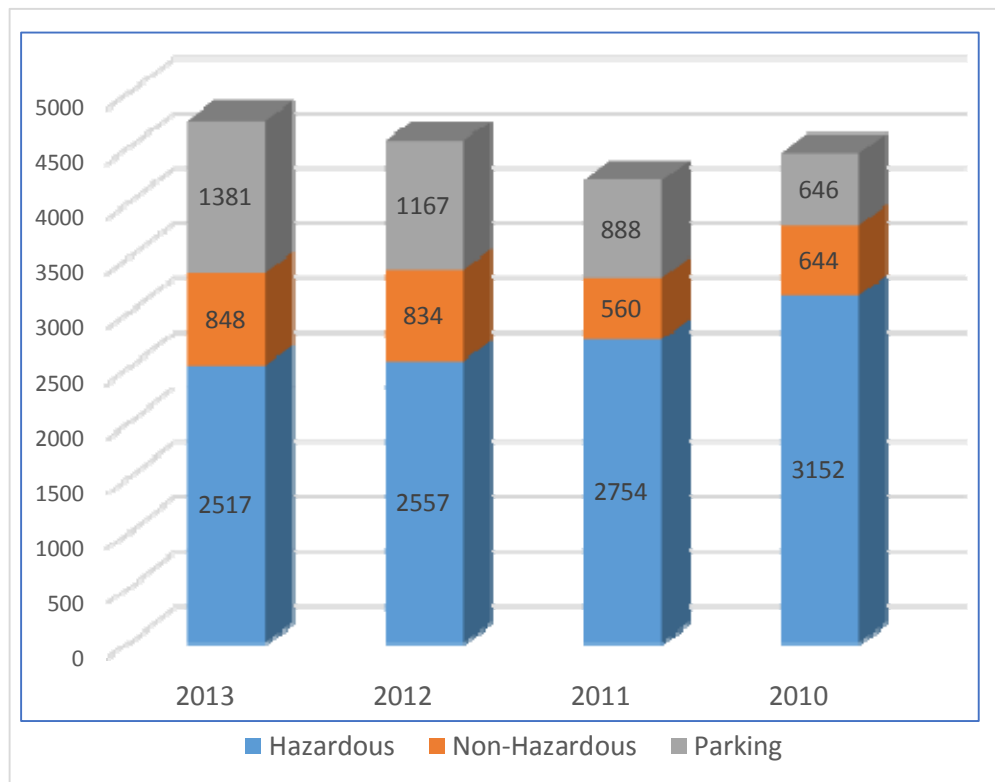
State		Grosse Pointe Park		
<u>2011</u>	<u>2013</u>	<u>2012</u>	<u>2011</u>	<u>2010</u>
32%	45%	48%	49%	53%

The **Patrol Division** consists of four platoons. Two supervisors, five officers and a civilian dispatcher comprise a platoon. They are responsible for the continuous protection of the community. The Patrol Division responds to a variety of requests for services on a daily basis including traffic stops and field investigations while on routine patrol. In other sections of the report we outlined the criminal, traffic accident, medic and fire type calls we handled last year. In addition to those calls for service we responded to over 7,800 additional calls for service. We respond to requests to investigate such things as suspicious activity, disturbances, noise complaints, animal complaints, traffic and parking complaints, trouble with persons, missing persons and many more. We realize that often these may seem very insignificant in nature but we realize that they were concerns to the person reporting.

# Traffic Enforcement

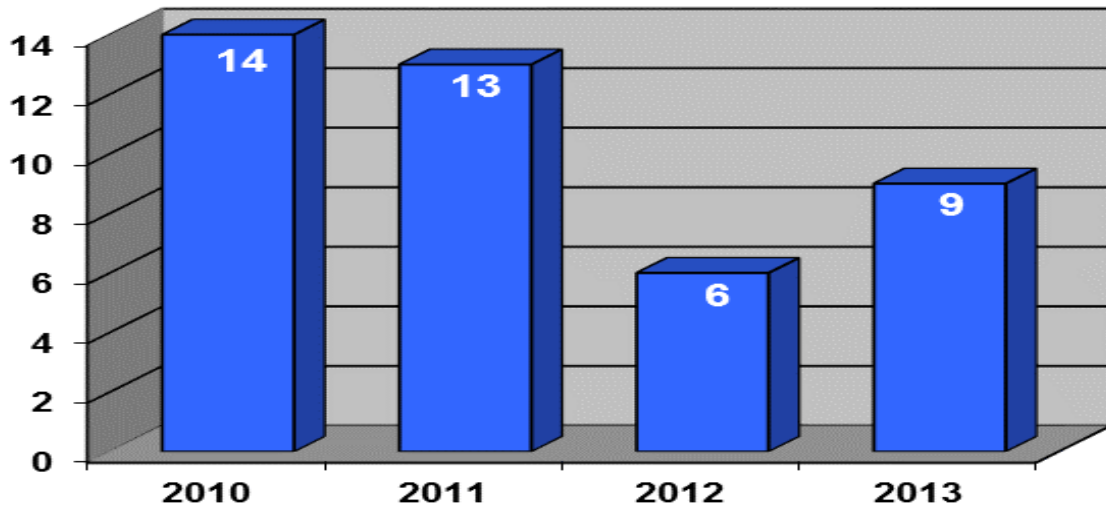
The enforcement of the *Michigan Motor Vehicle Code* and the *Michigan Uniform Traffic Code* is the responsibility of the Patrol Division of the Public Safety Department. By enforcing the traffic codes it is the goal of the Department to reduce personal injury accidents, property damage accidents and pedestrian accidents. Grosse Pointe Park has the remarkable record of not having a pedestrian fatality for more than 42 years. Officers in the course of patrol initiate thousands of vehicle stops. Those stops do not include the number of stops that ultimately lead to arrests.

The department assigns semi-marked radar equipped patrol units on a daily basis. The violations issued by the officers are broken into three basic groups: hazardous, non-hazardous, and parking. The primary violations issued are for speeding. Hazardous violations are issued for such things as, operating while intoxicated, signal lights, stop signs and other moving violations. Non-hazardous violations include violations such as operating with a suspended operator's license, no proof of insurance and improper license plates.

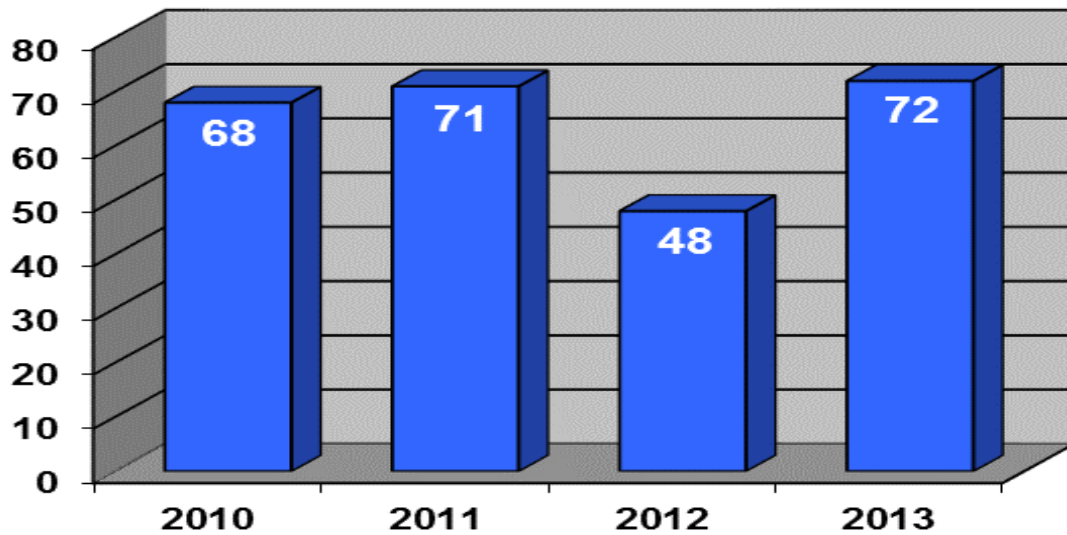


# Motor Vehicle Accidents

## Injury Accidents



## Property Damage Accidents



# Fire Activities

The activities listed below reflect the number responses by the Public Safety Department 2013 compared to the last three years. The Department prides itself on its quick response to any reported fire emergency. By training and equipping officers on the road to immediately assess and evaluate situations their arrival, we are able to keep the vast majority of our fires to a minimum.



of fire  
in  
  
upon

<b>CLASSIFICATION OF FIRE RESPONSE</b>	<b>2013</b>	<b>2012</b>	<b>2011</b>	<b>2010</b>
Dwelling - Single.	13	3	9	14
Dwelling - Multi Unit.	2	5	5	5
Commercial.	0	0	0	0
Church, School.	0	0	0	0
Other Misc. Buildings.	2	0	0	1
Motor Vehicles.	3	3	0	0
Trash, Leaf.	2	3	8	12
Hazardous Materials Incidents.	0	0	3	2
Rescues.	1	0	1	1
Other Outdoor.	6	2	3	5
False Alarms.	56	63	72	64
Smoke Investigations	28	25	28	36
Mutual Aid.	5	5	3	3
<b>TOTALS</b>	<b>118</b>	<b>109</b>	<b>132</b>	<b>143</b>

# Emergency Medical Services



The Department has two basic EMS units to provide primary ambulance response to Grosse Pointe Park, and we continue to provide mutual aid assistance to other surrounding communities. Twenty six of our thirty six of our sworn officers are also licensed as Basic Emergency Medical Technicians. In 2013 the department responded to 304 ambulance runs. The total number of patients seen was 306.

CITY	
Grosse Pointe Park	297
Grosse Pointe City	5
Grosse Pointe Farms	2
Detroit	4
Other	0

DESTINATION	
Beaumont	202
St John	41
Cottage	4
Other	2
No Transport	43

## PATIENTS

<u>CAUSE OF INJURY OR ILLNESS:</u>	
Abdominal Pains	15
Allergy/Hives	4
Back Pain	9
Breathing Problems/Choking	38
Heart Problems (nonspecific)	5
Chest Pain	14
Cardiac Arrest	4
Seizures	15
Diabetic Related	5
Hemorrhage	3
Overdose/Poisoning	11
OB/GYN	2
Psychiatric/Behavioral Problems	2
CVA/Paralysis	13
Unconsciousness/Syncope	25
Smoke Inhalation/Burns	1
Assault	0
Drowning	0
Electrocution	0
Fall	32
Heat/Cold/Haz Mat Exposure	0
Shooting	1
Stabbing	1
Motor Vehicle Accident	12
Traumatic Injury Other	27
Unknown Problem/Illness	67
False or Cancelled Runs	0

<u>AGE TOTALS:</u>	
Under 18	23
18 to 64	131
65 and Over	136
No Patient Seen	3

<u>SEX TOTALS:</u>	
Males	149
Females	157
No Patient Seen	3

<u>PATIENT PRIORITY CODE:</u>	
Priority 1	29
Priority 2	106
Priority 3	118
Priority 4 (Dead On Scene)	5
Patient not Transported	448

# Youth Services and Bike Patrol

## Youth Services Unit

The Youth Services Unit (YSU) continues to be a valuable asset to both our community and the Public Safety Department. The department is staffed by an YSU officer 24 Hrs a day. As situations arise involving our youth, an YSU officer can be assigned to begin accessing the situation and formulating a proper response.

YSU has consistently supported the Grosse Pointe Public School system. Officers continue to provide instruction on topics such as fire safety, bike safety, stranger awareness they also provide valuable instruction at the district sponsored, Safety Town program.

Some of the cases YSU officers investigated this past year involved child neglect, domestic violence, assault and weapon offenses. YSU officers are also charged with the responsibility of preparing case work for Juvenile Court proceedings.

## Bike Patrol

The Grosse Pointe Park Bike Patrol was formed in 2002 serves the Department with a consistent presence to support the objectives of the uniform division. Utilizing community policing concept, these officers take great pride in their ability to serve the merchants, the residents and the youth of our community.

Bike officers, with their increased visibility and approachability, are reminiscent of the foot beat officers days gone by. Bike patrol officers are assigned to the

West Park Farmers Market on Saturdays in the summer and have made hundreds of contacts with the merchants, citizens and the youth in our Community to promote a positive, friendly and professional image of our Department.



and  
the  
of

# Education/Seminars/Training

There is an enormous wealth of educational and training courses available through professional organizations, specialized training consultants, local colleges and universities, and online training resources. There are also several employees who are certified in different skills and they participate in regular updates to maintain certification. The following is a summary of the courses, seminars, training as well as the total number of hours attended during 2013. Whenever feasible, personnel are assigned to attend classes that meet the Department's needs.

<b>TRAINING</b>	<b>HOURS</b>
Firearms/Active Shooter/Rifle	432
Drivers Training	288
Emergency Medical Technicians	260
Department Policy and Procedure	72
Leadership Potential Development	96
Special Response Team	194
Fire/Ventilation/water supply/search and rescue	216
Auto Theft investigation	48
New Dispatch Operation	80
<b>TOTAL</b>	<b>1686</b>